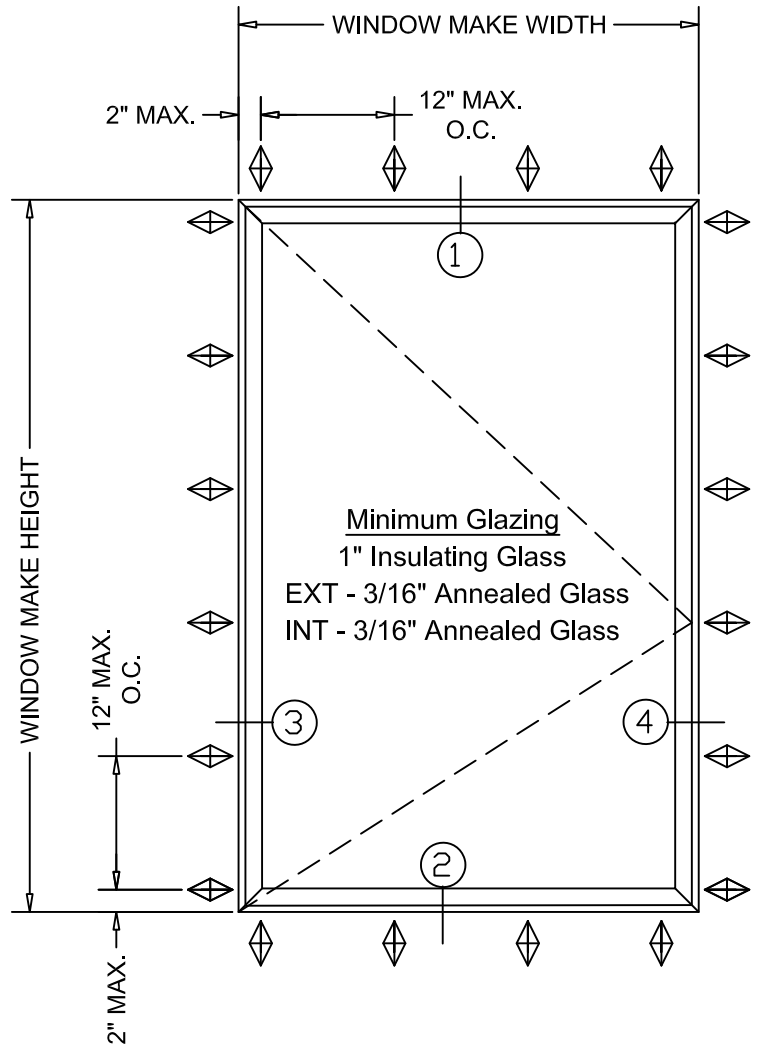


M600 CASEMENT OUTSWING WINDOW

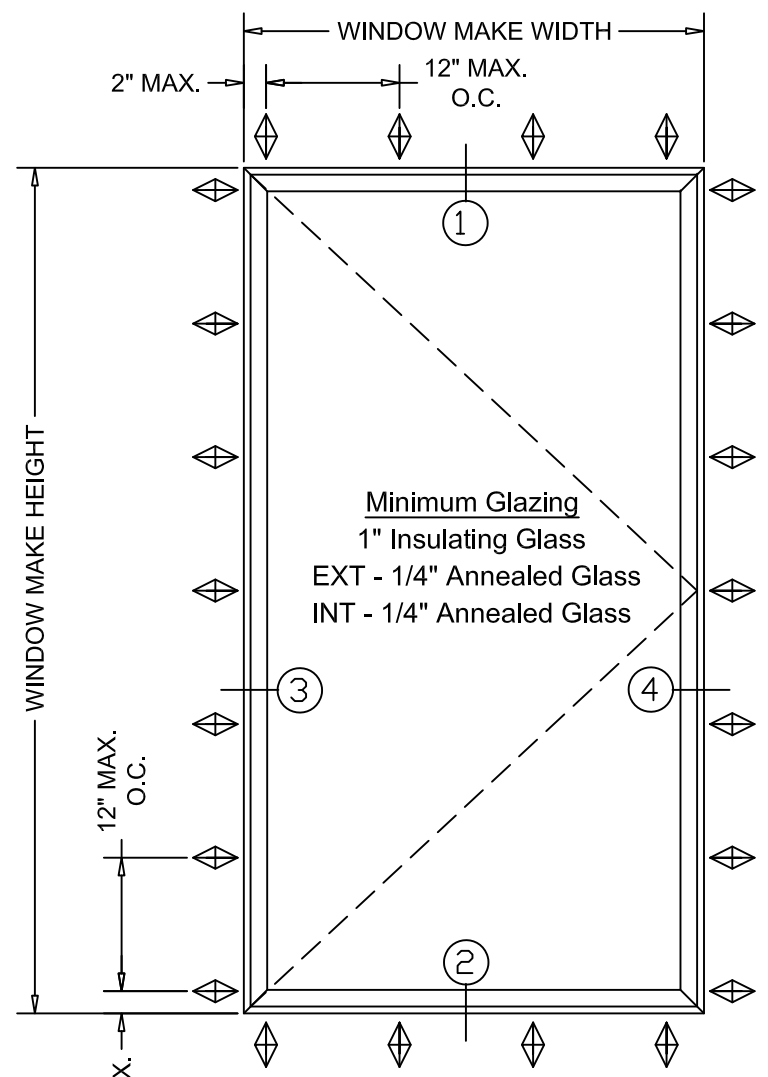
NOTES:

1. Installations depicted satisfy the requirements of the Florida Building Code, Building 8th Edition (2023) for design wind pressures and overall sizes noted.
2. Wood bucks, wood framing, steel stud framing, concrete and concrete masonry are by others and shall be designed by the architect or engineer of record to resist the loads imparted to them.
3. Wood bucks and wood framing are assumed S-P-F (G=0.55) or denser. Buck width shall be greater than the window frame width. Tapered or partial width buck strips are not allowed.
4. Steel stud frames are assumed to be a minimum 18 gauge 33 KSI steel.
5. Concrete masonry (CMU) shall conform to ASTM C90
6. Concrete shall be minimum $f_c = 3,000$ psi
7. Wood screws shall meet requirements of ANSI/ASME B18.6.1.
8. TEKS screws shall be ASTM A510 Grade 1018 or equivalent.
9. Hilti Kwik-Con + anchors as specified in NOA 21-0628.20.
10. Maximum shim thickness 1/4".
11. Products are not impact resistant and require an approved protection device if used in windborne debris regions.
12. Not for use in High Velocity Hurricane Zone (HVHZ).
13. Sealing and flashing strategies and overall water infiltration performance of the installed product are by others and not addressed by this document.



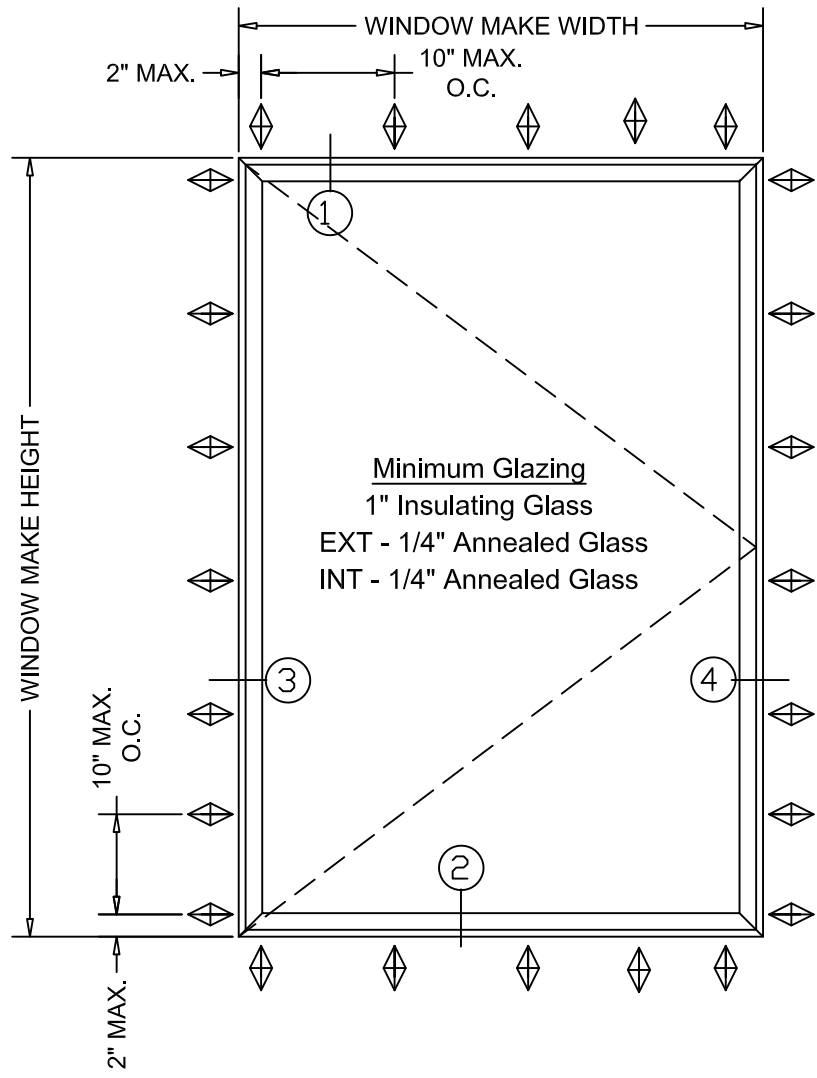
Maximum Dimensions and Design Pressure				
FW	FH	VENT-W	VENT-H	Pressure
36"	72"	34 7/16"	70 1/4"	± 70 PSF
DAYLIGHT OPENING		30"	65 3/4"	

Mark A



Maximum Dimensions and Design Pressure				
FW	FH	VENT-W	VENT-H	Pressure
36"	96"	34 5/16"	94 1/8"	± 70 PSF
DAYLIGHT OPENING		30"	89 3/4"	

Mark B



Maximum Dimensions and Design Pressure				
FW	FH	VENT-W	VENT-H	Pressure
48"	84"	46 1/4"	82 1/4"	± 70 PSF
DAYLIGHT OPENING		42"	78"	

Mark C

CONTENTS

Sheet 1/4	Elevations and Notes
Sheet 2/4	Fin Installations
Sheet 3/4	Strap Installations
Sheet 4/4	Strap Anchor Details

Tanya A. Dolby, P.E.
 FL License No. 93536
 Intertek-ATI
 130 Derry Ct., York, PA 17406
 717-764-7700
 Project Q4430.01-122-34

Project Name:

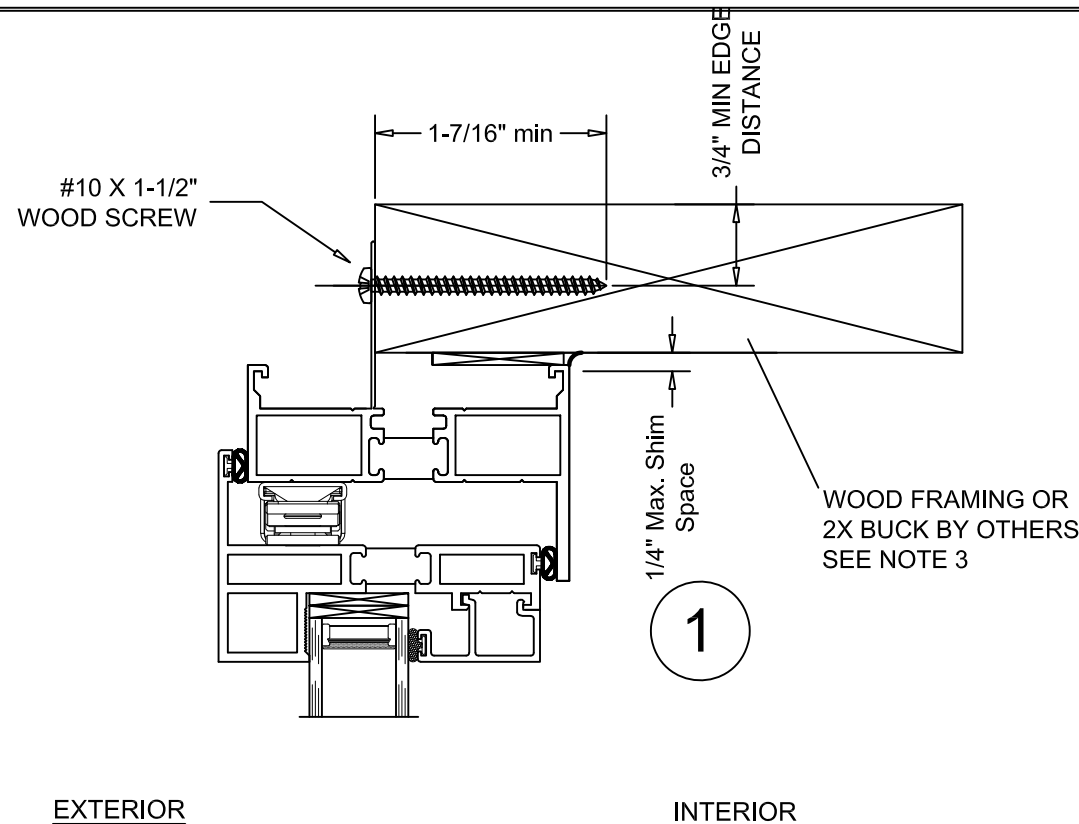
ELEVATIONS AND NOTES

Revision #	Date	By
1	04/11/21	MJT
2	05/09/21	MJT

QUAKER WINDOW PRODUCTS WILL NOT BE RESPONSIBLE FOR FIELD MEASUREMENT, QUANTITIES, & INSTALLATION DESIGN. CONTRACTOR MUST VERIFY ALL DIMENSIONS.

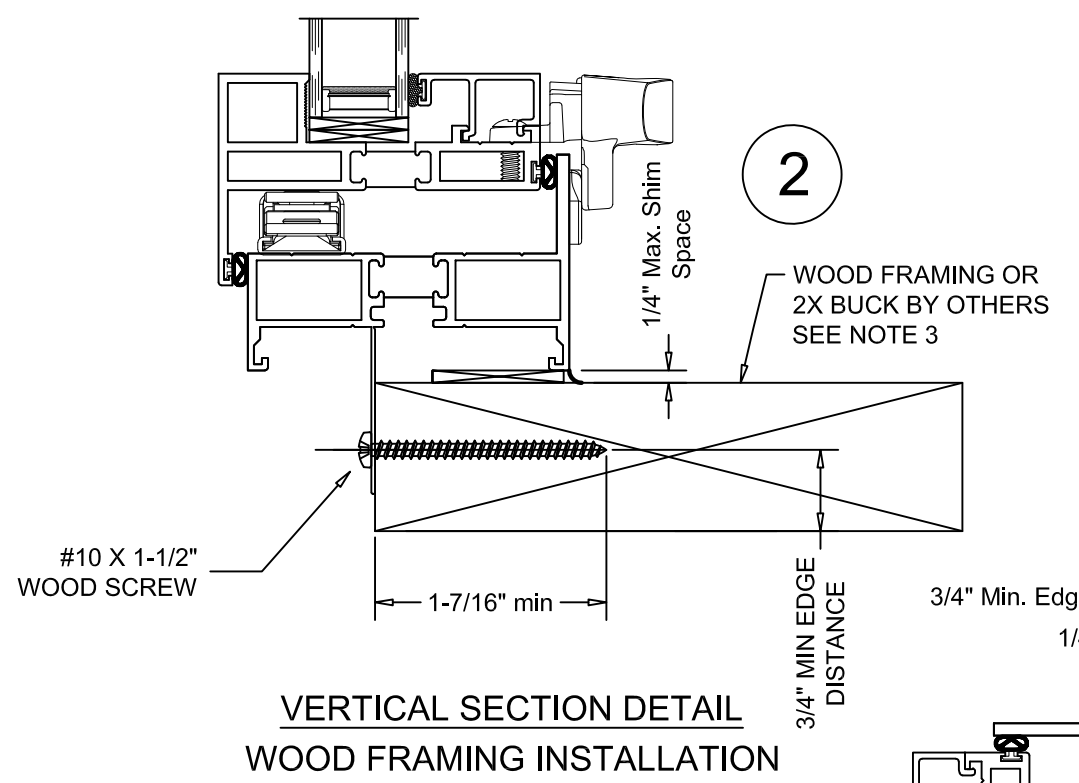

 PHONE (573)-744-5211
 FAX (573)-744-5586
 COMMERCIAL
 FAX (573)-744-5822
 www.quakerwindows.com
 Scale: NONE
 504 Highway 63 South
 Freeburg, MO 65035
 drafting@quakerwindows.com
 Sheet #: 1 of 4
 Drawn By: BUD
 Date: 08-15-2023

M600 CASEMENT O.S.
INSTALLATION INSTRUCTIONS

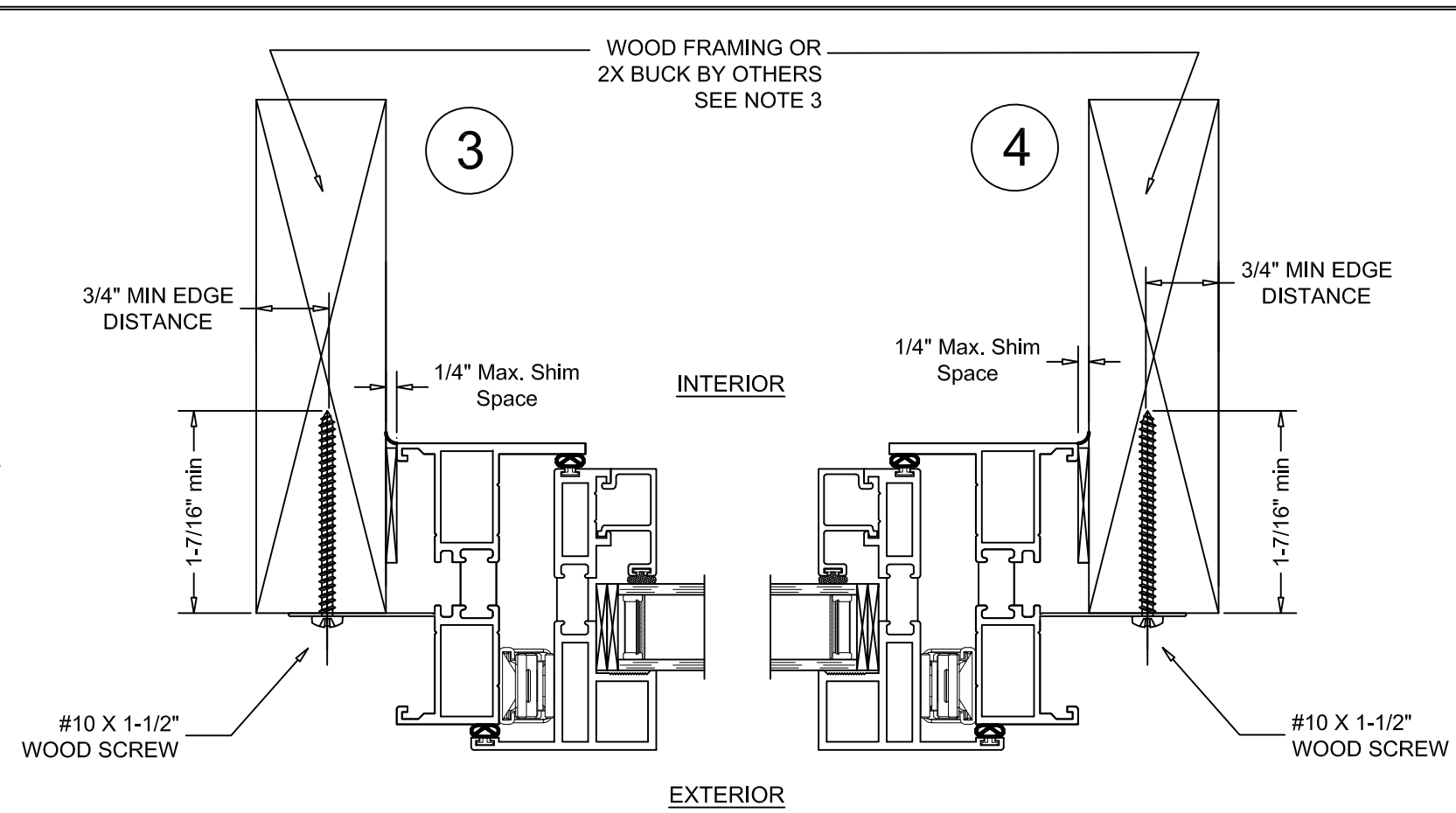


EXTERIOR

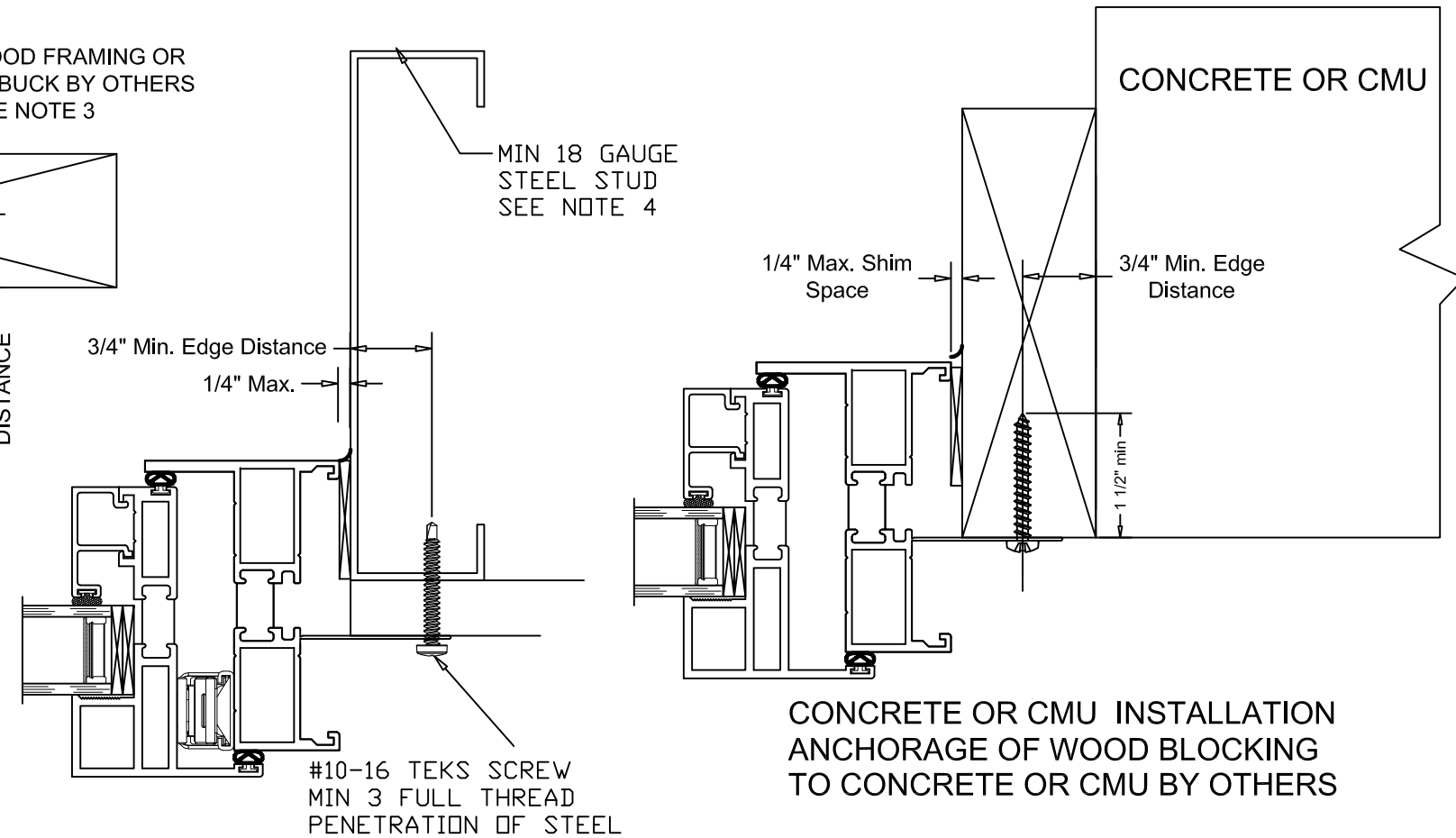
INTERIOR



VERTICAL SECTION DETAIL
WOOD FRAMING INSTALLATION



HORIZONTAL SECTION DETAIL
WOOD FRAMING INSTALLATION



CONCRETE OR CMU INSTALLATION
ANCHORAGE OF WOOD BLOCKING
TO CONCRETE OR CMU BY OTHERS

STEEL FRAMING INSTALLATION

Project Name:

FIN INSTALLATIONS

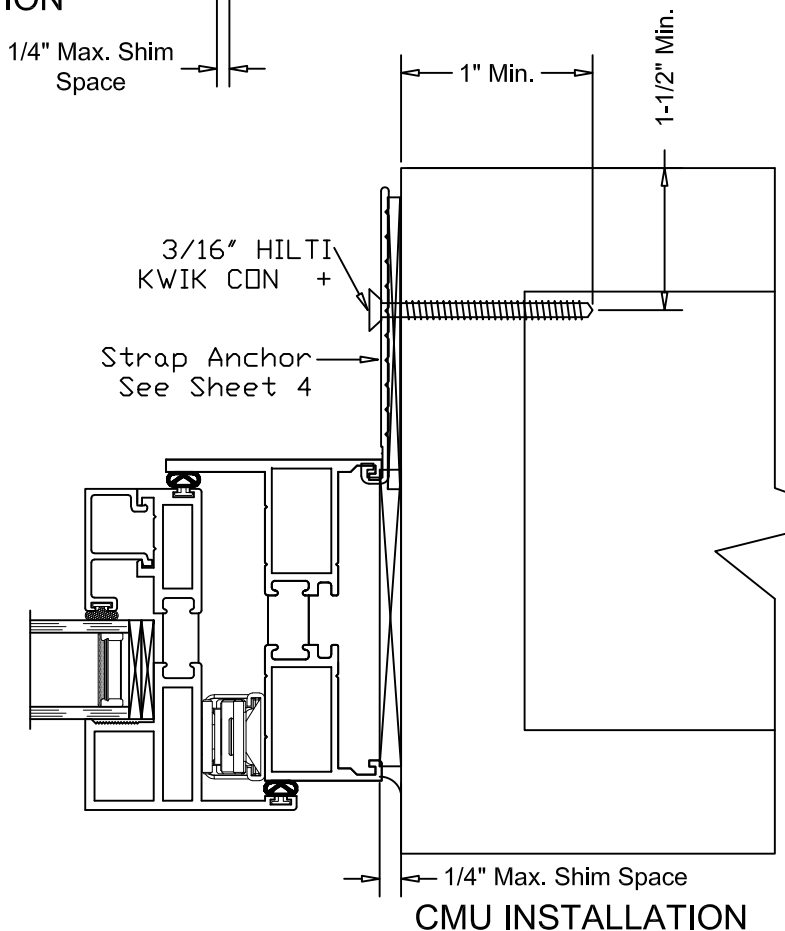
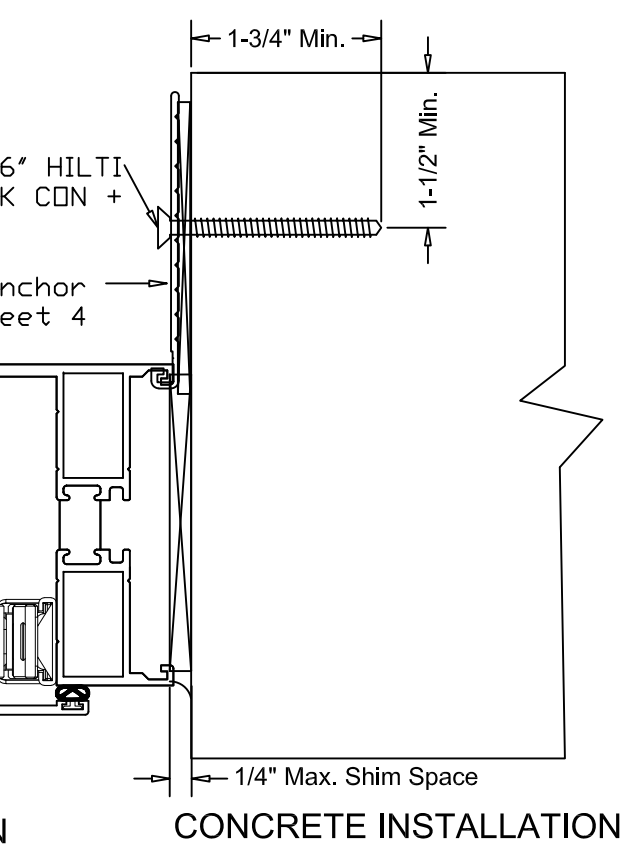
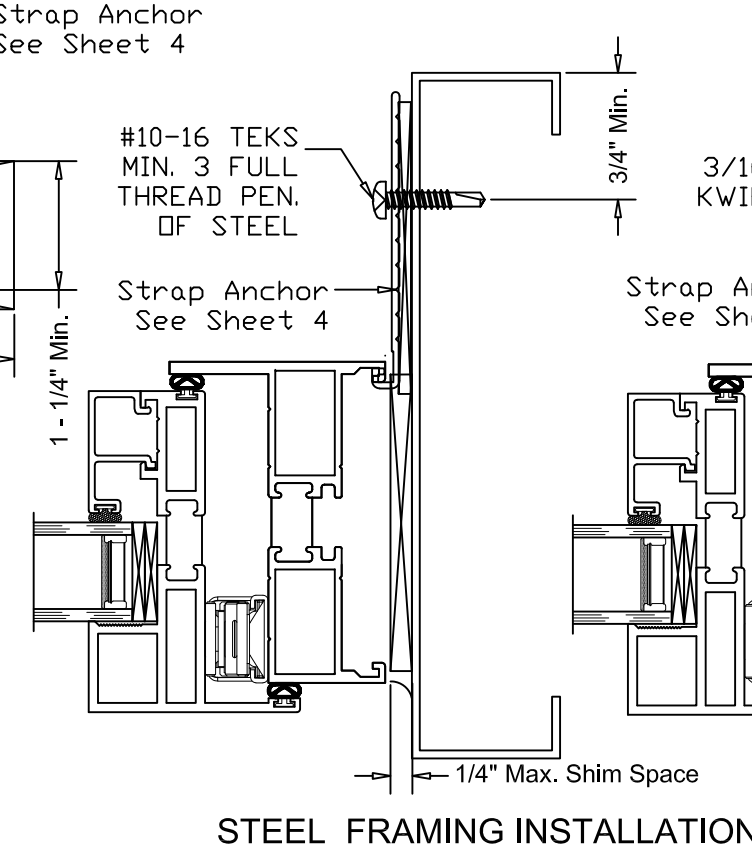
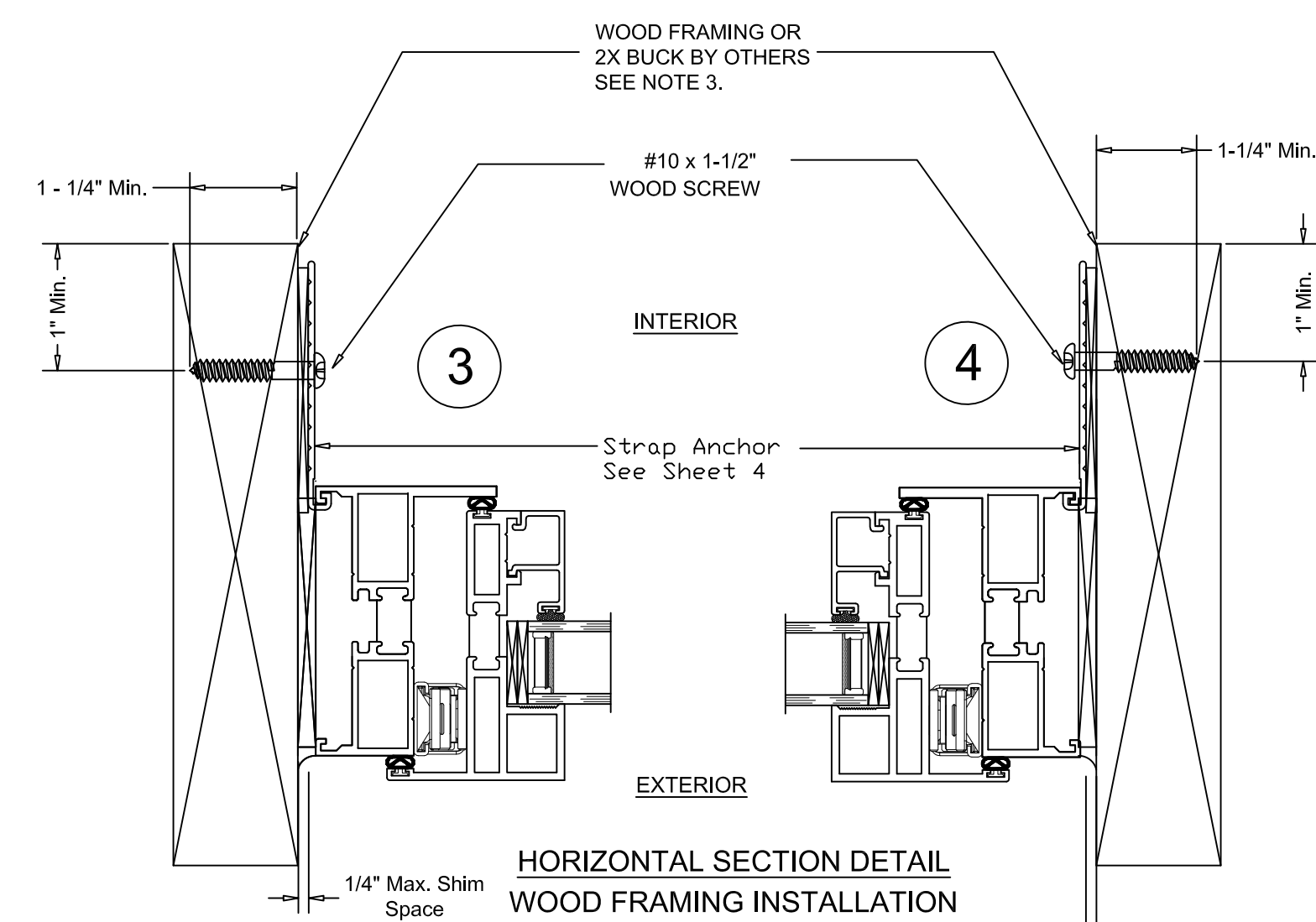
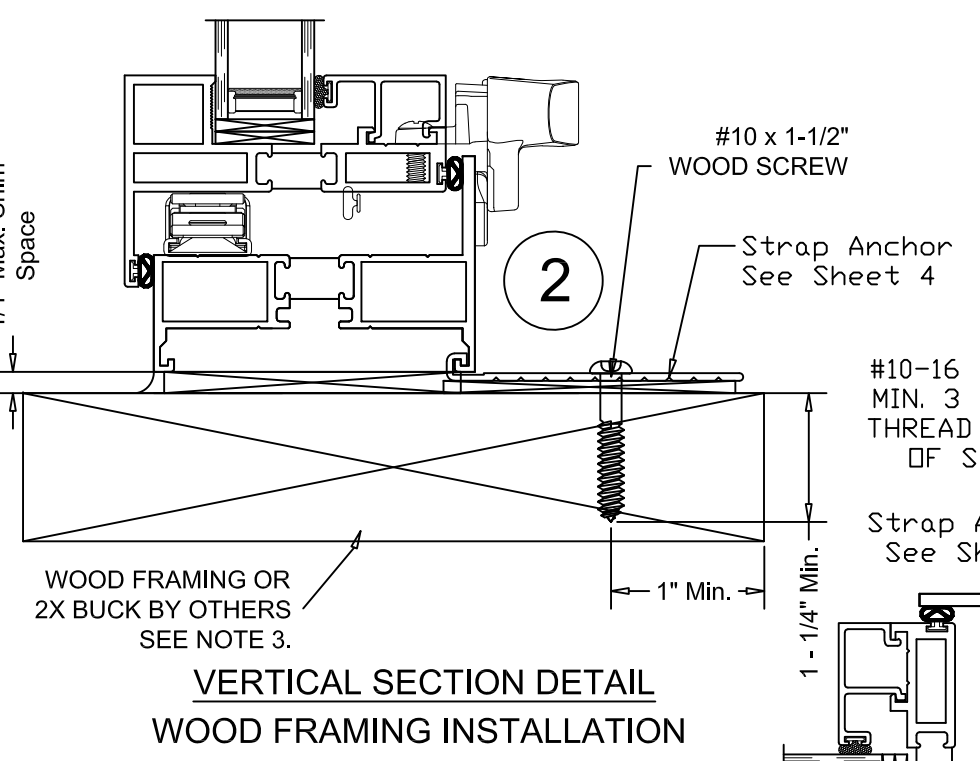
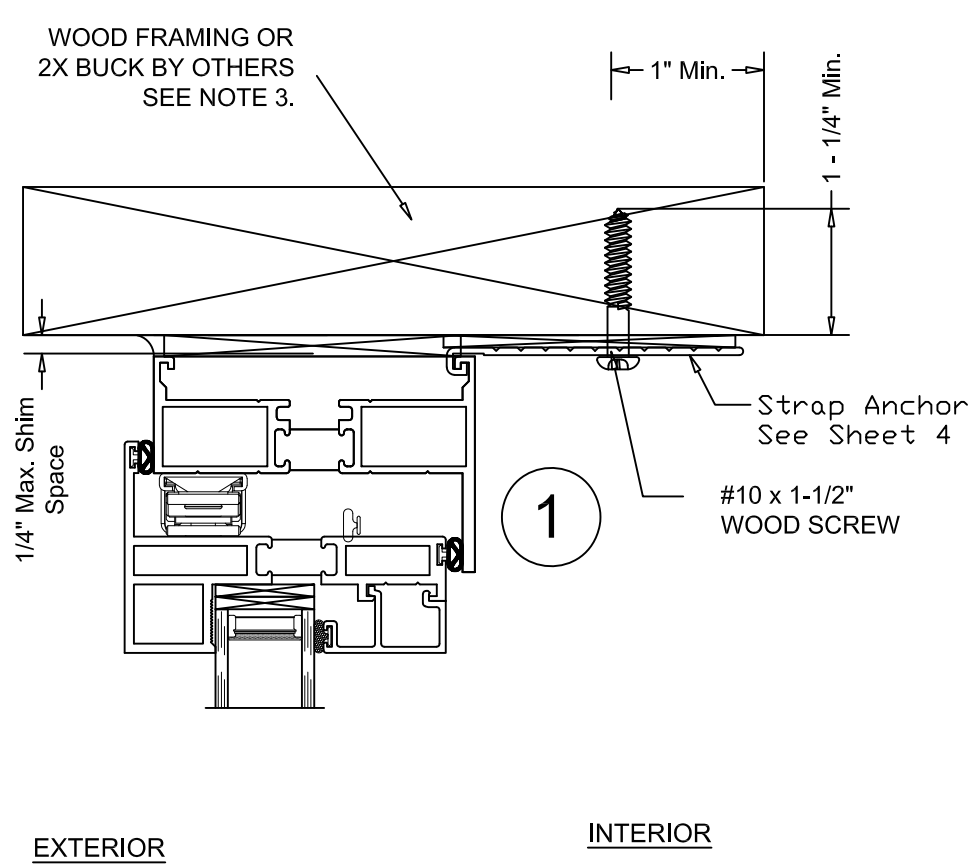
By:	MJT
Date:	05/09/21
Revision #:	2
By:	MJT
Date:	04/11/21
Revision #:	1
By:	MJT
Date:	04/11/21
Revision #:	1

PHONE (573)-744-5211	Scale:	NONE	Sheet #: 2 of 4
FAX (573)-744-5586	www.quakerwindows.com		
COMMERCIAL	504 Highway 63 South		
FAX (573)-744-5822	Freeburg, MO 65035		
	drafting@quakerwindows.com		
QUAKER COMMERCIAL WINDOW AND DOOR	Drawn By:	BUD	Date:
			08-15-2023

Tanya A. Dolby, P.E.
FL License No. 93536
Intertek-ATI
130 Derry Ct., York, PA 17406
717-764-7700
Project Q4430.01-122-34



M600 CASEMENT O.S.
INSTALLATION INSTRUCTIONS



Tanya A. Dolby, P.E.
 FL License No. 93536
 Intertek-ATI
 130 Derry Ct., York, PA 17406
 717-764-7700
 Project Q4430.01-122-34

Project Name: **M600 CASEMENT O.S.**

INSTALLATION INSTRUCTIONS

STRAP INSTALLATIONS

QUAKER WINDOW PRODUCTS WILL NOT BE RESPONSIBLE FOR FIELD MEASUREMENT QUANTITIES, & INSTALLATION DESIGN. CONTRACTOR MUST VERIFY ALL DIMENSIONS.

Revision #:	By:	Date:
1	MJT	04/11/21
2	MJT	05/09/21

Drawn By: **BUD**

Date: **08-15-2023**

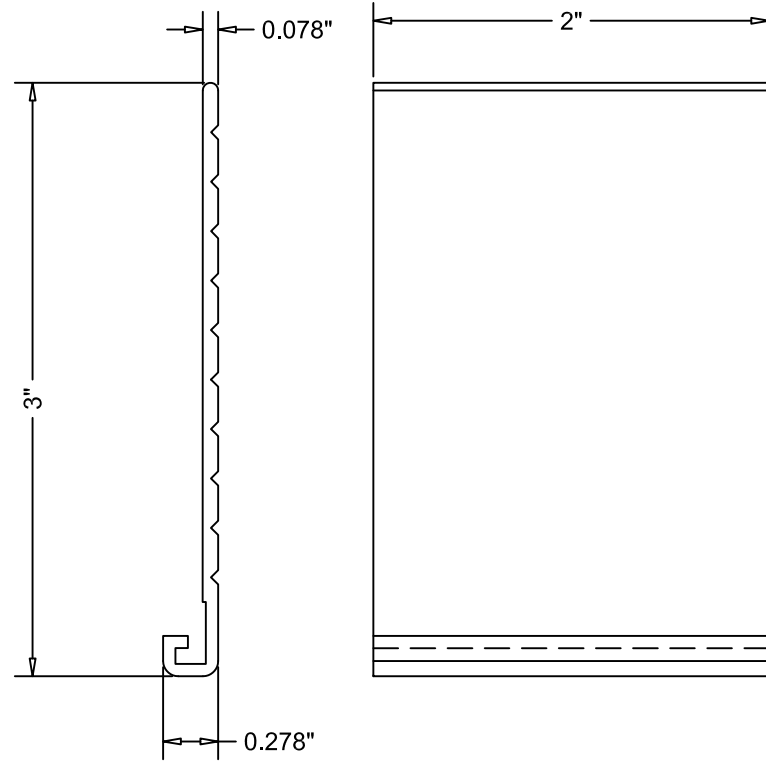
Scale: **NONE**

Sheet #: **3 of 4**

504 Highway 63 South
 Freeburg, MO 65035
 drafting@quakerwindows.com

PHONE (573)-744-5211
 FAX (573)-744-5586
 COMMERCIAL
 FAX (573)-744-5822
 www.quakerwindows.com

QUAKER
 COMMERCIAL WINDOWS AND DOORS



Strap Anchor
6063-T6 Aluminum
Die QUA 19801

Tanya A. Dolby, P.E.
FL License No. 93536
Intertek-ATI
130 Derry Ct., York, PA 17406
717-764-7700
Project Q4430.01-122-34



PHONE (573)-744-5211
FAX (573)-744-5586
COMMERCIAL
FAX (573)-744-5822
www.quakerwindows.com

Scale: NONE
Sheet #: 4 of 4
Drawn By: BUD
Date: 08-15-2023

Description:
STRAP ANCHOR DETAILS
QUAKER WINDOW PRODUCTS
WILL NOT BE RESPONSIBLE
FOR FIELD MEASUREMENT,
QUANTITIES, & INSTALLATION
DESIGN. CONTRACTOR MUST
VERIFY ALL DIMENSIONS.

Revision #:	Date:	By:
2	05/09/21	MJT
1	04/11/21	MJT

Project Name:

M600 CASEMENT O.S.
INSTALLATION INSTRUCTIONS